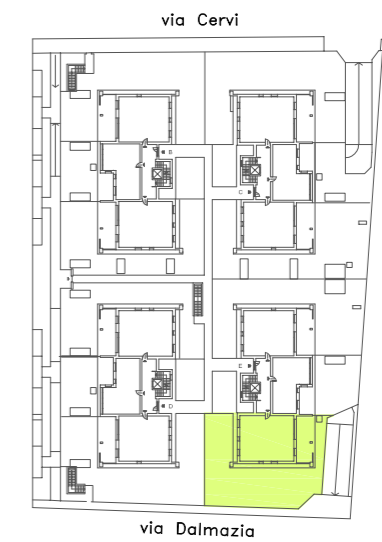
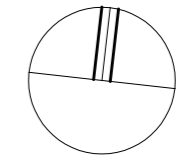
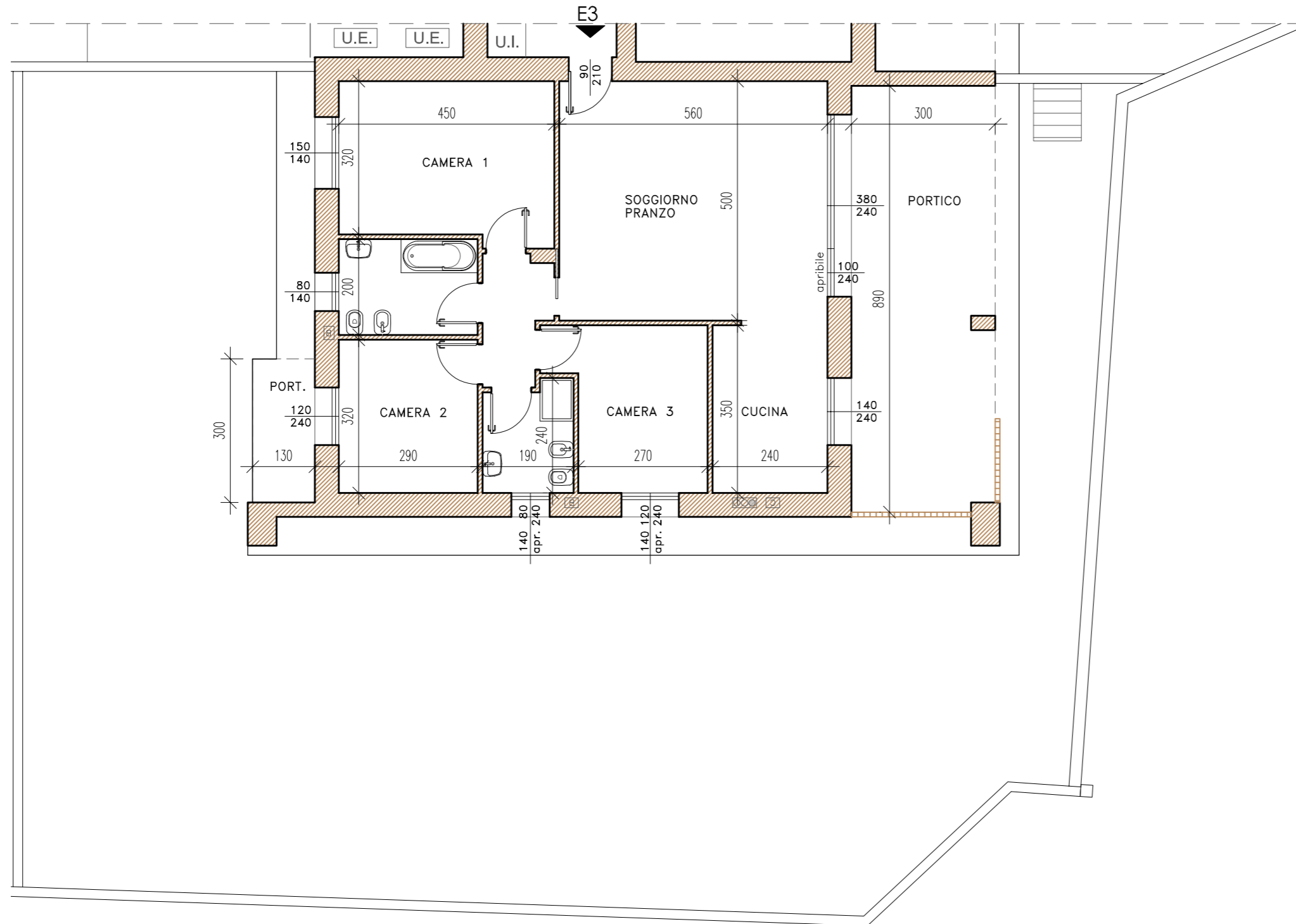


**E3**  
PIANO TERRA

**SUPERFICIE COMMERCIALE: abitazione mq. 106,05, portico mq. 27,95, balcone mq. 4,62, giardino mq. 218,00**





**E3**  
PIANO TERRA

**SUPERFICIE COMMERCIALE: abitazione mq. 106,05, portico mq. 27,95, balcone mq. 4,62, giardino mq. 218,00**

