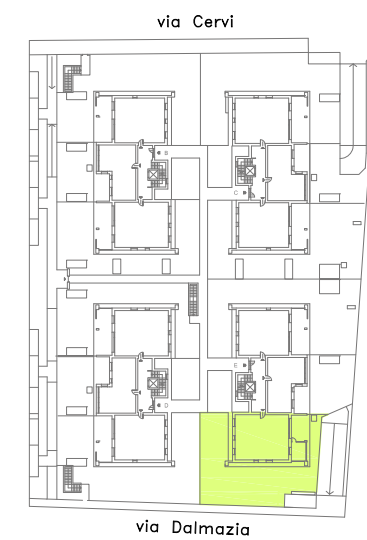
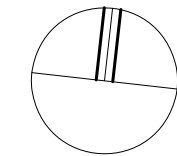
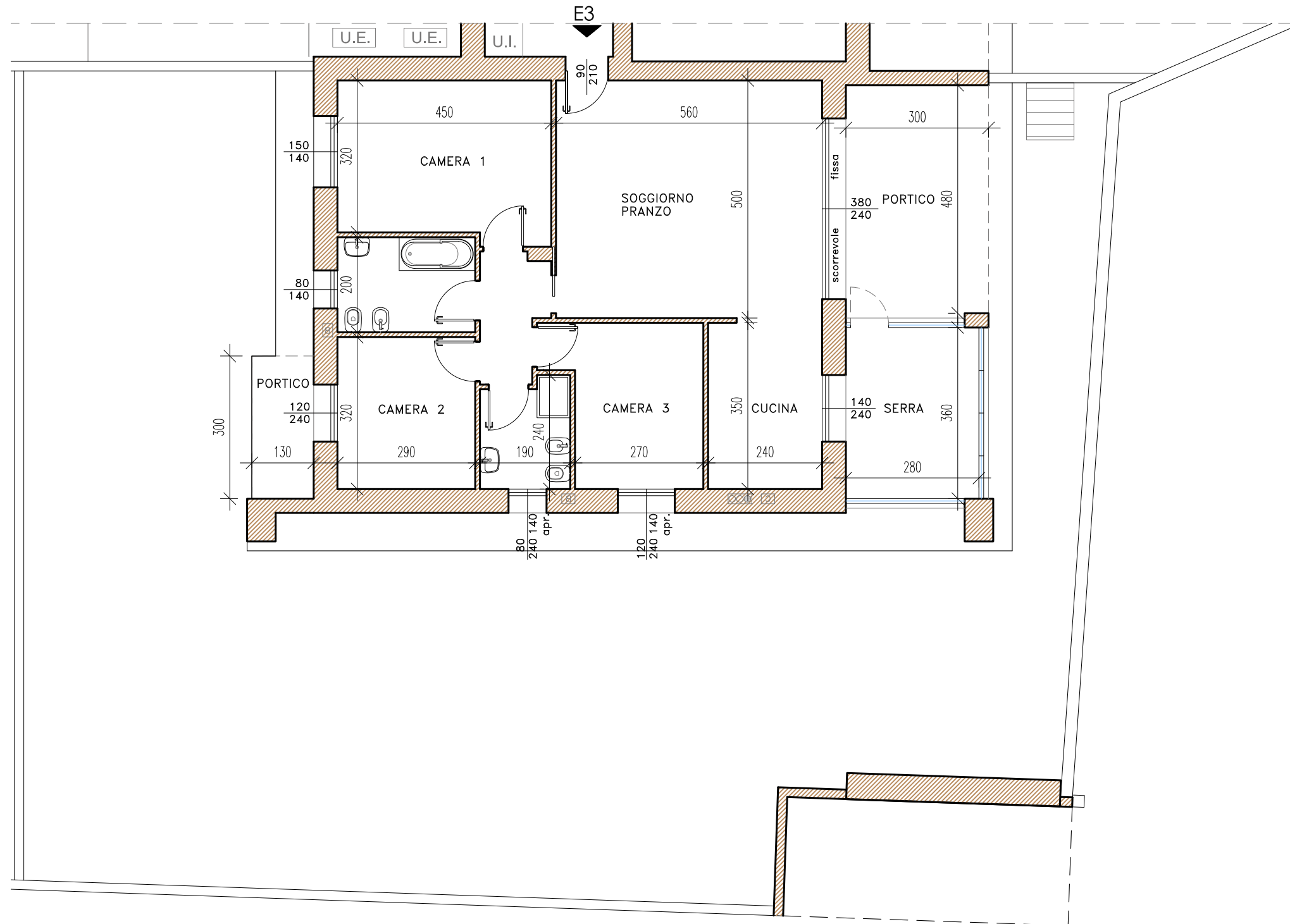


E3
PIANO TERRA

SUPERFICIE COMMERCIALE: abitazione mq. 106,05, portico mq. 17,45, balcone mq. 4,62, serra mq. 10,50, giardino mq. 219,00





E3
PIANO TERRA

SUPERFICIE COMMERCIALE: abitazione mq. 106,05, portico mq. 17,45, balcone mq. 4,62, serra mq. 10,50, giardino mq. 219,00

